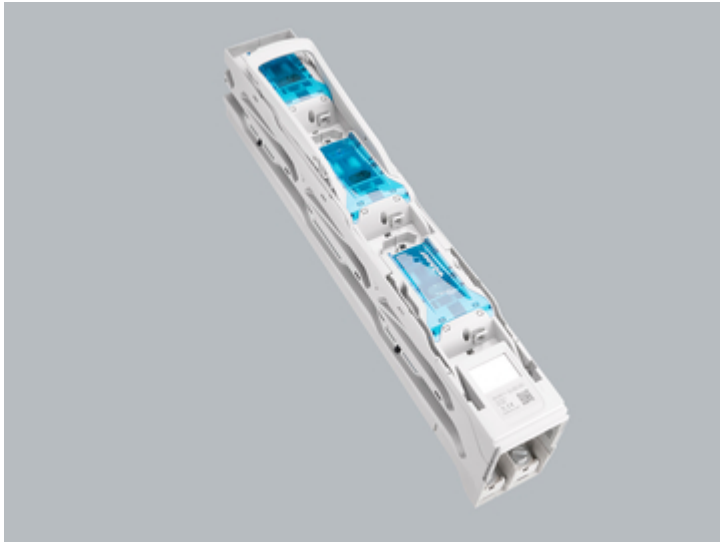


in-line fuse switch-disconnector 250 A (33 701)



Description

Article

Part No.: 33 701

QUADRON[®] 185Power

in-line fuse switch-disconnector 250 A

Bolt M12, 3-pole switchable

size 1

for busbars 30, 40, 60, 80, 100, 120 x 10

System

185Power

Product group 12

Subgroup 53

pack size 1

EAN 4021267337018

Advantages of the product

Self-closing inspection holes are available in the cover.

Cover can be locked when closed.

Catalog page 2015 : 4/7, 4/8

eCl@ss 6.1 27142108
eCl@ss 7.1 27142108
ETIM 4.0 EC001040
ETIM 5.0 EC001040

Approvals

Standards

IEC 60947-1:2007 + A1:2010 + A2:2014
IEC 60947-3:2008 + A1:2012

Approvals

IEC (CB), CCC



Type number: QU185-1

CCC certificate: 2015010302769224

Product data

Electrical data

Rated current (IEC): 250 A
Rated voltage (IEC) AC: 690 V

Utilisation category AC (IEC 60947-3) :	AC-23B 250A/400V
	AC-22B 250A/500V
	AC-22B 250A/690V
	AC-21B 250A/690V
Utilisation category DC (IEC 60947-3) :	DC-20B
	max. voltage between the fuses: 1000V visible information required: Do not switch under load.

Power dissipation:

The power dissipation at a typical load of 80% of the rated current results to 15.4 W.
(The power dissipation for operation with rated current would be 24 W.)

Rated surge voltage U_{imp} : 8 kV
max. permitted voltage (IEC) AC: 1000
V

cond. rated short-circuit current with fuses: 100 kA / 690 V
120 kA / 500 V
approved with fuse links of characteristics: gG

for fuse links IEC 60269-2-1 (I) / DIN VDE 0636-201 size 1 up to 23W power dissipation

Special operating conditions corresponding to IEC / EN 61439-1 may yield to faulty activations of pilot switches and fuse monitors. The operating conditions have to be considered for the analysis of status signals.

Degree of protection IP20 at front (see mounting instruction)

Mechanical data

W x H x D: 99 x 670 x 189
Weight: 480 kg/100
for busbars: 30, 40, 60, 80, 100, 120 x 10

front degree of protection: IP20

Type of fastening:

can be screwed onto drilled busbar, diameter 13mm, undrilled mounting with terminal clamp connection:
screw connection M12

Terminal points

screw M12 :
Md 30 Nm

Material properties

Main body:	temperature stability 130°C, self-extinguishing in acc. to UL 94, creepage resistance CTI 600, halogen-free
Contacts:	spring-loaded copper contacts, silver plated
Shock protection cover:	temperature stability 125°C, self-extinguishing in acc. to UL 94, creepage resistance CTI 200, halogen-free
Handle:	temperature stability 125°C, self-extinguishing in acc. to UL 94, creepage resistance CTI 600, halogen-free
Connecting screws:	screw M12, galvanized, chromized

Reference

Always use connection cover 33733 for connection top and for using cable lugs.

Accessories



33 735
Box terminal
for Cu and Al 50 mm² – 240 mm²
size 1 - 3



33 733
Terminal compartment cover
universal for NH-rails size 1-3 and connection rail 800A
size 1- 3



33 738
Terminal clamp for QUADRON®185Power
for busbar systems with CrossLink touch-safe protection
size 1 - 3



33 740
Terminal clamp for QUADRON®185Power
for systems without touch-safe protection
size 1 - 3



33 744
Current transformer 150 A / 5 A
1,5 VA / class 1
size 00 - 3



33 745
Current transformer 200 A / 5 A
1,5 VA / class 1
size 1 - 3



wöhner

33 746

Current transformer 250 A / 5 A
2,5 VA / class 1
size 1 - 3



wöhner

33 753

Current transformer 150 A / 5 A
1,5 VA / class 0,5
size 00 - 3



wöhner

33 292


Current transformer 200 A / 5 A
1,5 VA / class 0,5
size 00 - 3



wöhner

33 754

Current transformer 150 A / 5 A, with declaration of conformity
1,5 VA / class 0,5
size 00 - 3



wöhner

33 156

pilot switch
changeover 250 V AC / 5 A; 30 V DC / 4 A



wöhner

33 758

lateral bearing strip
for front covers
size 00 - 3

**33 736**

Box terminal
for Cu and Al 70mm² – 300mm²
size 1-3

**33 747**

Current transformer 400 A / 5 A
2,5 VA / class 1
size 1 - 3

**33 748**

Current transformer 600 A / 5 A
2,5 VA / class 1
size 1 - 3

**33 761**

Rear touch-safe protection cover
Rear protection for Phase L1
NEW

**33 293**

Current transformer 200 A / 5 A, with declaration of conformity
1,5 VA / class 0,5
size 1 - 3

**33 294**

Current transformer 250 A / 5 A
2,5 VA / class 0,5
size 1 - 3

**33 295**

Current transformer 250 A / 5 A, with declaration of conformity
2,5 VA / class 0,5
size 00 - 3

wöhner

33 298

Current transformer 400 A / 5 A
2,5 VA / class 0,5
size 00 - 3

wöhner

33 299

Current transformer 400 A / 5 A, with declaration of conformity
2,5 VA / class 0,5
size 00 - 3

wöhner

33 762

Universal current transformer module
for mounting in the connection compartment, including front and rear cover
size 1 - 3

NEW