

### Szigeteletlen szemes lemezsaruk

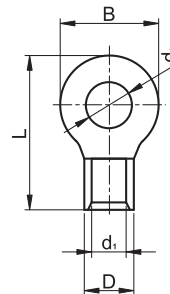
TRACON	d <sub>1</sub> (mm)	d <sub>2</sub> (mm)	D (mm)	L (mm)	B (mm)	mm <sup>2</sup>				
SZ1.5-3	2.3	3.7	4	16	8.4					
SZ1.5-4	2.3	4.3	4	16	8.4					
SZ1.5-5	2.3	5.3	4	16	8.4					
SZ1.5-6	2.3	6.4	4	21.5	11.6	1.5-2.5	1.5-2.5	1-1.5		
SZ1.5-8	2.3	8.4	4	21.5	11.6					
SZ1.5-10	2.3	10.5	4	25.5	13.7					
SZ2.5-4	3	4.3	5	17.8	8					
SZ2.5-5	3	5.3	5	17.8	8					
SZ2.5-6	3	6.4	5	21	12					
SZ2.5-8	3	8.4	5	27.5	15	4-6	2.5-4	2.5-4		
SZ2.5-10	3	10.5	5	27.5	15					
SZ2.5-12	3	13	5	30.8	18.9					
SZ4-4	3.4	4.3	5.5	19	9.6					
SZ4-5	3.4	5.3	5.5	19.6	9.6					
SZ4-6	3.4	6.4	5.5	23	12	4-6	(2.5)4-6	(2.5)4-6		
SZ4-8	3.4	8.4	5.5	27.6	15					
SZ4-10	3.4	10.5	5.5	27.6	15					
SZ10-4	4.5	4.3	7.1	23.8	12					
SZ10-5	4.5	5.3	7.1	23.8	12					
SZ10-6	4.5	6.4	7.1	23.8	12					
SZ10-8	4.5	8.4	7.1	29.7	15	6-10	(4)6-10	4-6		
SZ10-10	4.5	10.5	7.1	29.7	15					
SZ10-12	4.5	13	7.1	32.8	19					
SZ16-5	5.8	5.3	9	28	12					
SZ16-6	5.8	6.4	9	28	12					
SZ16-8	5.8	8.4	9	32.2	16	16-25	10-16	6-10		
SZ16-10	5.8	10.5	9	32.2	16					
SZ16-12	5.8	13	9	40.9	22					
SZ25-5	7.7	5.3	11.5	33.7	16.4					
SZ25-6	7.7	6.4	11.5	33.7	16.4					
SZ25-8	7.7	8.4	11.5	33.7	16.4	25-35	16-25	10-16		
SZ25-10	7.7	10.5	11.5	36.7	17.4					
SZ25-12	7.7	13	11.5	42.6	22					
SZ35-6	9.4	6.4	13.5	42.8	22.1					
SZ35-8	9.4	8.4	13.5	42.8	22.1					
SZ35-10	9.4	10.5	13.5	42.8	22.1	50-70	35-50	25-35		
SZ35-12	9.4	13	13.5	42.8	22.1					



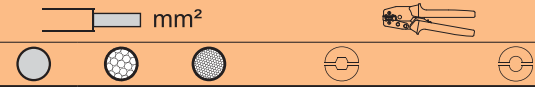





TÜV MEEI TEST DOCUMENTATION  
**V-07008**

RELEVANT STANDARD  
**MSZ-05-45.1601-1**

RELEVANT STANDARD  
**EN 61238-1**



## Szigeteletlen szemes lemezsarú

TRACON	d <sub>1</sub> (mm)	d <sub>2</sub> (mm)	D (mm)	L (mm)	B (mm)	mm <sup>2</sup>				
										
SZ50-6	11.4	6.4	15.5	50	22					
SZ50-8	11.4	8.4	15.5	50	22					
SZ50-10	11.4	10.5	15.5	50	22	70-95	50-70	35-50		
SZ50-12	11.4	13	15.5	47.2	22					
SZ50-16	11.4	17	15.5	57.4	32					
SZ70-6	13.3	6.4	17.5	51	24					
SZ70-8	13.3	8.4	17.5	51	24					
SZ70-10	13.3	10.5	17.5	51	24	95-120	70-95	50-70		
SZ70-12	13.3	13	17.5	51	24					
SZ70-16	13.3	17	17.5	60.7	31.8					
SZ95-8	14.5	8.4	19.5	54	27					
SZ95-10	14.5	10.5	19.5	54	27					
SZ95-12	14.5	13	20.5	54	23.8	120-150	95-120	50-70		
SZ95-16	14.5	17	20.5	58	27.8					
SZ120-8	16.4	8.4	22.5	56	28.4					
SZ120-10	16.4	10.5	22.5	56	28.4					
SZ120-12	16.4	13	22.5	55.6	28.4	-	120-150	70-95		
SZ120-16	16.4	17	22.5	69	32					
SZ150-10	19.5	10.5	26.5	65.8	36					
SZ150-12	19.5	13	26.5	65.8	36					
SZ150-16	19.5	17	26.5	65.8	36	-	185	150		
SZ150-20	19.5	21	26.5	80.5	36					
SZ150-24	19.5	25	26.5	80.5	36					
SZ185-10	21	10.5	28.5	68.8	38.4					
SZ185-12	21	13	28.5	68.8	38.4					
SZ185-16	21	17	28.5	68.8	35.8	-	240	150-185		
SZ185-20	21	21	28.5	87	38.8					
SZ185-24	21	25	28.5	87	38.8					
SZ240-10	24	10.5	32.5	71.5	44					
SZ240-12	24	13	32.5	71.5	44					
SZ240-16	24	17	32.5	71.5	44	-	300	185-240		
SZ240-20	24	21	32.5	90.6	44					
SZ240-24	24	25	32.5	90.6	44					

HX120B

HX150B

D31; D31E

D51; D55E

D62E

C130L

KH120

