

NH fuse switch-disconnector size 00, 160 A, panel mounting (33 221)



Description

Article

Part No.: 33 221

QUADRON® Panel

NH fuse switch-disconnector size 00, 160 A, panel mounting
connection cleat 70 mm², with short protection cover

System

Mounting plate

Product group 09

Subgroup 03

pack size 1

EAN 4021267332211

Advantages of the product

For safe connection of the leads, the shock protection is split into 2.

eCl@ss 6.1 27142108
eCl@ss 7.1 27142108
ETIM 4.0 EC001040
ETIM 5.0 EC001040

Approvals

Standards

IEC 60947-1:2007 + A1:2010 + A2:2014
IEC 60947-3:2008 + A1:2012

Approvals

IEC (CB), UL, Germanischer Lloyd, CCC



for UL feeder circuits >250V

Type number: LTS-00

UL file: E230163, UL category (for USA): IZLT2 <http://www.ul.com>
CCC certificate: 2004010302117250

Product data

Electrical data

Rated current (IEC): 160 A
Rated voltage (IEC) AC: 690 V
Rated voltage (IEC) DC: 440 V

Rated current (UL): 160 A
Rated voltage (UL) AC: 600 V

Utilisation category AC-23B (400V)
AC (IEC 60947-3) : AC-23B (500V/125A)
AC-22B (690V)
AC-21B (690V)
AC-20B (1000V) at pollution degree 2

visible information required if used at more than 690V AC: do not switch under load

Utilisation category DC specifications: 2 current paths (L1,L3) in series
DC (IEC 60947-3) : DC-22B (220V)
DC-22B (440V/125A)
DC-21B (440V)
DC-20B (1000V) at pollution degree 2

visible information required if used at more than 440V DC: do not switch under load

Power dissipation:

The power dissipation at a typical load of 80% of the rated current results to 4.5 W.
(The power dissipation for operation with rated current would be 7 W.)

rated isolation voltage U_i (AC): 800
V
Rated surge voltage U_{imp} : 6 kV
max. permitted voltage (IEC) AC: 800
V
max. permitted voltage (IEC) DC: 800
V

cond. rated short-circuit current with fuses: 50 kA / 690V
approved with fuse links of characteristics: gG

SCCR: 100 kA

for fuse links IEC 60269-2-1 (I) / DIN VDE 0636-201 size 00 up to 12W power dissipation

Special operating conditions corresponding to IEC / EN 61439-1 may yield to faulty activations of pilot switches and fuse monitors. The operating conditions have to be considered for the analysis of status signals.

Entsprechend den angegebenen AC- und DC- Schalteigenschaften und unter Berücksichtigung der Überlastbedingungen, sind gewisse Abstände zu geerdeten Metallteilen einzuhalten. Nähere Informationen auf Anfrage.

Bei Verwendung als Trennschalter ist die Einhaltung der Abstände nicht erforderlich.

Degree of protection IP30 at front, degree of protection near terminal depends on installation

Mechanical data

W x H x D: 106 x 151 x 83

Weight: 71.6 kg/100

Poles: 3-pole

front degree of protection: IP30

Terminal points

clamp-type terminals :

1,5 - 70 mm²

flexible cables with wire-end ferrule,

stranded round cables,

la. Cu max. 12 mm wide, max. 10 mm thick

Md 3 Nm

(flexible cables of maximum cross-section may not fit when using wire-end ferrule)

Accessory:

Screwed connection: M8 / 70mm²; 12 - 14Nm torque

Single prism clamp: Cu, Al* 16-70mm² s(r), s(s), f+AE; 3Nm torque

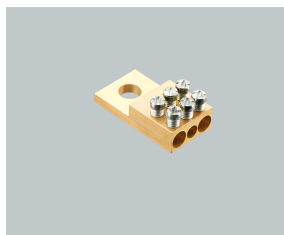
tunnel terminal 3x Cu 1.5-16mm² s(r), f+AE; 3Nm torque

*Connections not maintenance-free if aluminium conductors are used.

Material properties

Main body:	temperature stability 125°C, self-extinguishing in acc. to UL 94, creepage resistance CTI 600, halogen-free
Shock protection cover:	temperature stability 125°C, self-extinguishing in acc. to UL 94, creepage resistance CTI 200
Handle:	temperature stability 125°C, self-extinguishing in acc. to UL 94, creepage resistance CTI 200
Contacts:	spring-loaded copper contacts, silver plated

Accessories



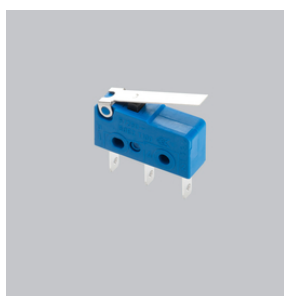
01 182
tunnel terminal
1 x 2,5 - 16mm² + 2 x 2,5 - 25mm²
NH 00



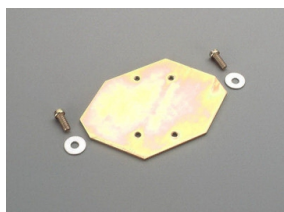
03 849
lid interlock
for sealing wire
Size 00



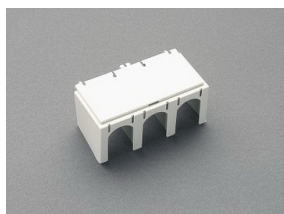
30 894
M8 screw connector
with spring washer
size 00



33 156
pilot switch
changeover 250 V AC / 5 A; 30 V DC / 4 A



33 193
rapid mounting set
for 2 DIN rails, rails centre distance 125 mm or 150 mm
size 00



33 223
cover for connecting space
for 33 221, 33 222
size 00

**33 224**

prism terminal, single, for Cu and Al cables

16 - 70 mm²

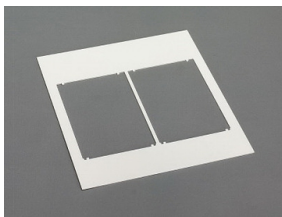
NH 00

**33 225**

Trim frame, single

143 x 210, for 33 221, 33 222

size 00

**33 226**

Trim frame, double

232 x 210, for 33 221, 33 222

size 00